

Tamagotchi Uni



CONTENTS

P1	1 CAUTION
P1	2 PRECAUTIONS FOR USE
P1	3 DISCLAIMER
P2	4 OTHER NOTES
P2	5 INQUIRIES ABOUT TAMAGOTCHI UNI SERIES PRODUCTS
P2	6 DEVICE GUIDE
P2	7 DEVICE AND BAND
P3	8 CHARGING THE DEVICE
P3	9 CHECKING THE BATTERY
P3	10 TURNING ON THE DEVICE
P3	11 SETTINGS
P4	12 AGREEMENT TO PRIVACY POLICY / TERMS OF USE
P4	13 WI-FI CONNECTION SETTINGS
P5	14 VIEWING SCREENS
P5	15 RAISING TAMAGOTCHI CHARACTER

P6	16 HEALING YOUR TAMAGOTCHI CHARACTER
P6	17 STATUS/SETTINGS
P7	18 CARE ICONS
P7	19 SETTINGS
P7	20 FEED
P8	21 TOILET/BATH
P8	22 PHONE
P8	23 TAMAVERSE
P9	24 ITEMS
P10	25 GO OUT
P11	26 CONNECT
P12	27 NETWORK

© & © 2023 BANDAI



1 CAUTION!

- For Ages 6 and up.
- Clock accuracy: 10 seconds per day.
- Please note that product may differ slightly from images in the instruction manual.
- Images are for illustrative purposes only.
- Choking Hazard: Contains small parts. Do not give to children under 3 years of age.
- Read instruction manual before use.
- Please do not use this product if you have a pacemaker as it contains electronic components, speakers, magnets etc.
- Misuse of the internal battery may cause overheating, rupture, combustion, or leakage. Please note the following:
 - Short-circuits can cause dangerously high electrical currents. Avoid this under any circumstances.
 - If the product gets wet, stop using it immediately. It may short-circuit.
 - Do not place in water or fire, disassemble, or solder.
 - Do not use, charge, or store this product close to fire or in locations with high temperature and humidity.
 - When disposing of the product follow the disposal regulations of your local government.
- Charge the product in full view, away from flammable objects.
- Before charging, check that there are no abnormalities with the charging cable. Do not charge if the cable is damaged. Failure to do so may result in injury or damage.
- If you detect abnormalities during charging or use of this product such as overheating, foul odor, expanding, or smoke, disconnect this product from the charging cable and stop using it immediately.
- Check the charging status with the battery display on the clock screen. If the battery is not charging while this product is plugged in, or has not finished charging after 2 hours, disconnect the product from the charging cable and stop using it immediately.
- Do not wrap the cable around fingers or other body parts. This could dangerously inhibit blood flow.



Do not place in water or operate with wet hands. This may cause the product to break. Avoid use or storage in high humidity.

WARNING! Not suitable for children under 3 years. Small parts. Choking hazard. Use under adult supervision. Colours, contents and decoration of contents may vary. Not all products may be available in your country. Retain packaging and instruction as it contains important information. Manufactured in China. Distributed by: Bandai UK Ltd, 37-39 Kew Foot Road, Richmond, TW9 2SS, UK. For further information email: support@bandaistore.co.uk or online at www.bandai.co.uk This toy contains battery that is non-replaceable. Recharging only with person with age of 8 years or older and under adult supervision, never charge the device unattended. Check the product and power cable before charging. Do not charge if the product or power cable is broken or worn. Connect the USB charging cable to a 5V USB port. Recommend using a PC or laptop. Inappropriate use may lead to smoke, fire, and other hazards. Some USB charging ports may not work for this device. Misuse of charging device can cause electrical shock. Press reset button if device can't play properly. Charge the product in a visible location and away from combustibles. Remove the power cable and stop use of the product if the product is hot, has an unusual odor, warps, smoke can be seen, or any other anomalies are detected while charging or using the product. Use the power cable specific to the product. Do not use any other charging cable that was not packaged with the product. Remove the power cable and stop use of the product if the product does not show that it is being charged, or the product does not charge after 2 hours of charging. Do not tug on the cord when removing the power cable as it can break or lead to complications. Do not use product under cold temperatures. The cold may affect the battery and prevent proper function of the product. Do not drop, water, dirty or dismantle the device and prevent getting wet on the device while washing hands when you wear the device. Prevent damage to or entry of any foreign object into the USB port. Specific Absorption Rate (SAR) information for this device: The SAR limit is 4W/kg average over one gram of tissue. SWALLOWUNI has been tested against this SAR limitation. The highest SAR value reported under the required

standards during product certification is found 0.286 W/kg only. / Frequency Bands: 2.4GHz band / 2412MHz-2472MHz Maximum Radio-Frequency Power<20dBm (For EU market) Herby, Bandai Co., Ltd. Declares that the radio equipment type SWALLOWUNI is in compliance with Directive 2014/53/EU. The full text of the EU declaration of conformity is available at the following <https://mnc.tyb.jp/UNI/EUDECLARATION/>

2 PRECAUTIONS FOR USE

- Plastic packaging materials should be discarded immediately after opening.
- Do not place this product on plastic sofas, seats, tiles, etc. Prolonged contact may cause discoloration.
- Do not roughly pull or bend the moving or mounted parts in unintended directions.
- This product is composed of precise electronic parts. Do not drop, get wet, soil, or disassemble. Avoid use or storage in high or low temperatures.
- Press reset button in case of malfunction.
- Only use the charging cable intended for use with this product Do not use a generic charging cable under any circumstances.
- When the charging cable is connected, do not put undue stress on the connector. This may cause damage.
- Do not use in temperatures of 5°C or below. The internal battery may not function properly, preventing normal operation. This may also prevent the device from charging properly.
- No guarantees are provided regarding lost data.

3 DISCLAIMER

⚠ WARNING: Changes or modifications to this unit not expressly approved by the party responsible for compliance could void the user's authority to operate the equipment. **NOTE:** This equipment has been tested and found to comply with the limits for a Class B digital device, pursuant to Part 15 of the FCC Rules. These limits are designed to provide reasonable protection against harmful interference in a residential installation. This equipment generates uses and can radiate radio frequency energy and, if not installed and used in accordance with the instructions, may cause harmful interference to radio communications. However, there is no guarantee that interference will not occur in a particular installation. If this equipment does cause harmful interference to radio or television reception, which can be determined by turning the equipment off and on, the user is encouraged to try to correct the interference by one or more of the following measures: Reorient or relocate the receiving antenna. Increase the separation between the equipment and receiver. Connect the equipment into an outlet on a circuit different from that to which the receiver is connected. Consult the dealer or an experienced radio TV technician for help. Shielded cables must be used with this unit to ensure compliance with the Class B FCC limits. This device complies with Part 15 of the FCC Rules. Operation is subject to the following two conditions: (1) this device may not cause harmful interference, and (2) this device must accept any interference received, including interference that may cause undesired operation. CAN ICES-3 (B)/NMB-3(B). This device contains licence-exempt transmitter(s)/receiver(s) that comply with Innovation, Science and Economic Development Canada's licence-exempt RSSI(s). Operation is subject to the following two conditions: (1) this device may not cause interference. (2) This device must accept any interference, including interference that may cause undesired operation of the device.

4 OTHER NOTES

* When setting up this product for the first time, you must have internet access in order to agree to the privacy policy and terms of service.

<RADIO INTERFERENCE>

- This product uses a lithium ion polymer battery. Follow the disposal regulations of your local government when discarding your Tamagotchi Uni.
- Comply with airline company regulations when using the product in an aircraft.
- Comply with administrator instructions when using the product in hospitals or places with electronic equipment that use weak signals or high-precision controls.
- When equipped with medical electronic devices, or when using medical electronic equipment other than implantable devices during home recuperation, please confirm the effect of radio waves with the medical device manufacturer or distributor before using this product.

<COMMUNICATION FUNCTION>

- Usage in close proximity to other electronic devices may result in radio wave interference. Use in another location to avoid this.
- Radio waves may prevent wireless transmissions, especially when using a microwave oven.
 - If several Wi-Fi access points exist nearby and use the same channel, they may not appear in search.
 - We do not take any responsibility for data or information leakage that occurs during Wi-Fi transmission. Compatibility with all Wi-Fi access points is not guaranteed. Services that use Wi-Fi may be suspended, put under maintenance, or may change in content without notice.

<WI-FI CONNECTION>

This product is compatible with 2.4 GHz IEEE 802.11 b/g/n (HT20) and WPA/WPA2/WPA3 security.

<END OF SERVICE>

Tamagotchi Uni services that use Wi-Fi may be suspended without notice. Please see the official website for details.

<DATA UPDATES>

- The product is connected wirelessly when these symbols are shown in the upper-left of the screen.



5 INQUIRIES ABOUT TAMAGOTCHI UNI SERIES PRODUCTS

Bandai Customer Support Center Bandai Namco Toys & Collectibles America Inc. 23 Odyssey, Irvine, CA 92618 Open Monday - Friday 10:00am to 5:00pm (excluding national holidays, and summer and winter holidays) Or send inquiry email to Customer Service on www.bandai.com * For North America customer only.

MADE IN CHINA

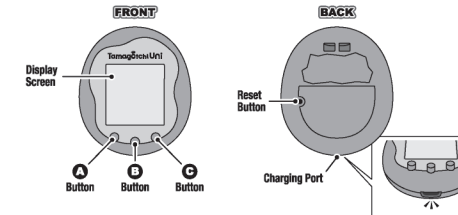
Manufactured for Bandai Namco Toys & Collectibles America Inc. 23 Odyssey, Irvine, CA 92618

Actual size, color, style and decoration may vary. Retain packaging and instruction as it contains important information. Bandai logo: © & © 2023 BANDAI. All Rights Reserved. Package: © & © 2023 BANDAI.

6 DEVICE GUIDE

<INCLUDED COMPONENTS>

- Tamagotchi Uni ...1
- Tamagotchi Uni Band ...1
- Charging Cable ...1
- Instruction Manual ...1



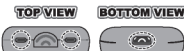
BASIC OPERATION

- A** Select **B** Confirm **C** Cancel/Back

7 DEVICE AND BAND

The Tamagotchi Uni device has 3 cavities (2 on top and 1 on the bottom).

<DEVICE>

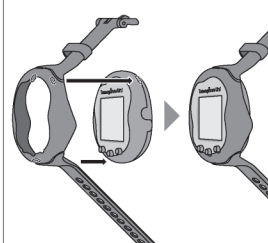


The band of the Tamagotchi Uni device has 3 protrusions (2 on the top and 1 on the bottom).

<BAND>

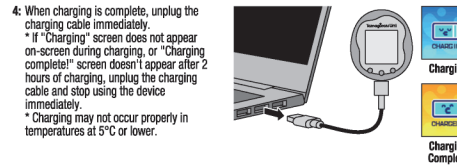
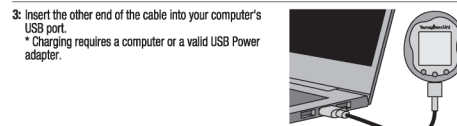
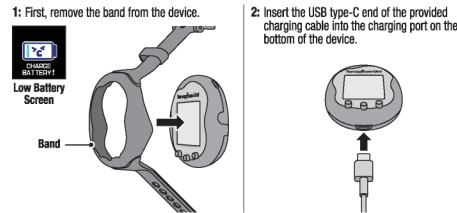


Assemble the Tamagotchi Uni device by placing the band on and bringing the 2 top and 1 bottom parts together.

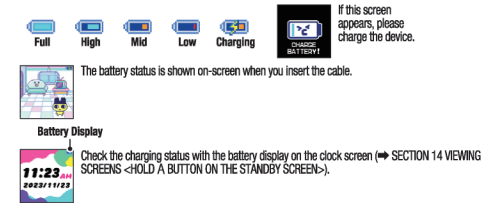


8 CHARGING THE DEVICE

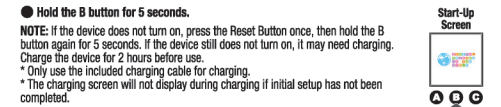
- When the low-battery screen appears (see below), please charge your Tamagotchi device.
- You must remove your Tamagotchi device from your wrist before charging.



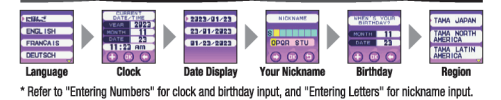
9 CHECKING THE BATTERY



10 TURNING ON THE DEVICE



11 SETTINGS



* Refer to "Entering Numbers" for clock and birthday input, and "Entering Letters" for nickname input.

ENTERING NUMBERS

A	Scroll to next number
G Hold + A Press	Scroll to previous number
B	Confirm/Proceed
C Twice	Return to previous selection

ENTERING LETTERS

Cursor

- Move the cursor and select the box to enter a letter in. (The cursor will blink until a selection is made.)
- Select the row with the letter you want.
 - The menu is displayed in the following order: letters > numbers > symbols > smileys > end.
- Move the cursor and select the letters/numbers/symbols/smileys.
- Select YES on the confirmation screen to finish typing.
 - How to Reach the Confirmation Screen (3 ways)**
 - Scroll to the end row and press the B button.
 - Move cursor to the last letter box and press the A button.
 - Enter a letter in the last letter box and press the B button.

Confirmation Screen

12 AGREEMENT TO PRIVACY POLICY / TERMS OF USE

- If you don't understand, show a family member.
- You must agree to the privacy policy and terms of use before playing with the Tamagotchi Uni device. Please scan the codes below with your mobile device to access the privacy policy and terms of use. If you agree, select AGREE to confirm.
- Internet fees may apply.

<PRIVACY POLICY>

<https://tmgc.ty.jp/UNI/PRIVACYPOLICY/>



<TERMS OF USE>

<https://tmgc.ty.jp/UNI/AGREEMENTS/>



* Shows intellectual property information. <https://tmgc.ty.jp/UNI/LEGALINFO/>

NOTES ON READING CODES VIA MOBILE DEVICE:

- Update your device's OS to the latest version. iPhone users should use the normal Camera function.
- For browsers, iPhone users should use Safari, and Android users should use Google Chrome.

13 WI-FI CONNECTION SETTINGS

* You can change settings at a later time.

- You can play with the Tamagotchi Uni while connected to the internet via Wi-Fi.
- Requires an internet connection and a wireless router or access point.
- This product is compatible with 2.4 GHz IEEE 802.11 b/g/n (HT20) and WPA/WPA2/WPA3 security.
- Internet fees may apply.

When setting up Wi-Fi, select BY PHONE to set up with your mobile device, or select BY DEVICE to set up with your Tamagotchi Uni device. If you wish to set Wi-Fi at a later time, select SET LATER.

NOTE: The device cannot connect to the internet when using authentication settings like a captive portal (a service that requires login via a browser when connecting to wireless LAN).

- On your home's wireless router, check the SSID (the router name) and the password (an encryption key or security key).
- If you do not know the SSID/password, see the instruction manual or homepage for your wireless router (or access point), or contact the manufacturer.
- For your Tamagotchi device's MAC address, go to NETWORK SETTING, WI-FI SETTING and select BY PHONE, and check the bottom of the Settings page displayed on your mobile device.
- If the device does not connect successfully, service may be suspended or under maintenance. Please see the official website for details.

SETTING BY PHONE

NOTES ON READING CODES VIA MOBILE DEVICE:

- Update your device's OS to the latest version. iPhone users should use the normal Camera function.
- If images or videos do not display on your mobile device, try temporarily disabling cellular data.
- For browsers, iPhone users should use Safari, and Android users should use Google Chrome.

- When your mobile device camera is ready, press the B button to proceed to the next step.
- Scan the code that appears with your mobile device camera to connect the Tamagotchi device to your mobile device. When scanning is complete, proceed to the next step.
- When the device is connected to your mobile device, "CONNECTED!" will appear. Press the B button to proceed to the next step.

- The next screen will be for setting up Wi-Fi connection on your mobile device. Prepare the information needed to connect to Wi-Fi, such as your wireless router/access point's SSID and password. When you're ready, press the B button to proceed to the next step.
- Scan the code with your mobile device camera to access the settings screen. After scanning, input your wireless router/access point's SSID and password on your mobile device. The next screen will display once input is complete.
- When settings have been configured, this screen will be displayed. Press the B button to proceed to the next step. A connection test will be performed. Upon a successful test, you will move to the Egg Selection screen.

SETTING BY DEVICE

First, select AUTO or MANUAL.
 * AUTO setting will work in most cases.
 * For details on MANUAL, check "Change Settings" (→ SECTION 27 NETWORK <CHANGE SETTINGS>).

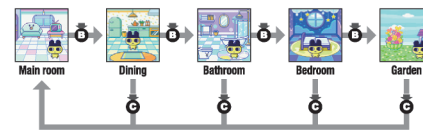
AUTO

Select the SSID (wireless router name) for the wireless router/access point in use.
 * Non-alphanumeric characters will not be displayed. If the SSID contains non-alphanumeric characters, they will be displayed as "??".

Enter the password to your wireless router.
 * Refer to SECTION 11 SETTINGS <ENTERING LETTERS> for password input. After input, a connection test will be performed. Upon a successful test, you will move to the Egg Selection screen.

14 VIEWING SCREENS

The Care Menu and the Clock screen are accessible from various screens.



PRESS THE A BUTTON ON THE STANDBY SCREEN

- Use different Care options to look after your Tamagotchi character!

Care Menu

STATUS/SETTINGS	FEED	TOILET/BATH
PHONE	TAMAVERSE	ITEMS
GO OUT	CONNECT	NETWORK

* Only STATUS/SETTINGS and NETWORK are available while your Tamagotchi character is sleeping.
 * Only some Care options are accessible at the Baby stage.

HOLD A BUTTON ON THE STANDBY SCREEN

Battery Display

Clock Screen

Clock Menu Screen

DESIGN: Change the design of your clock.
 DATE/TIME: Change the date and time.
 DISPLAY: Change the date display order.

15 RAISING TAMAGOTCHI CHARACTER

As it grows, your Tamagotchi character's appearance and characteristics will change according to how you take care of it, so give it lots of love!



My Tamagotchi Character Talks?!
 Your Tamagotchi might speak to you sometimes!
 * Be sure to set SOUND to ON. (→ SECTION 19 SETTINGS <SOUND>)

See your Tamagotchi Character's Personality!

You can meet talking Tamagotchi characters when you go out?!

How it takes a bath... Its accessories... Even where it takes a pool!

16 HEALING YOUR TAMAGOTCHI CHARACTER

If your Tamagotchi character shows either of the symptoms on the left, press any button (A, B or C) to give it treatment! If once doesn't do the trick, try again!

Tamagotchi Cold Cavity

MY TAMAGOTCHI CHARACTER LOOKS LIKE IT'S GOING TO DIE!

If you let your character stay sick or don't take good care of it, the Grim Gotchi will appear. If you see the Grim Gotchi, hurry and press any button (A, B or C) to call an Ambulance!

Here comes the Grim Gotchi! Call that Ambulance!

IF YOUR TAMAGOTCHI CHARACTER DIES...

If your Tamagotchi character dies, the Death screen will appear. Press the A button to see the Clock screen. Press the B button to view the profile of the Tamagotchi character that has passed away. Press the A button while holding the C button, and a new egg will appear.

17 STATUS/SETTINGS

Check the status of your Tamagotchi character, and change any device settings!

STATUS

Find out the current status of your Tamagotchi character. Check often to see how to care of it!

HUNGER: Shows hunger level
 HAPPY: Varies by mood and relationship with you.
 GOTCHI POINTS: Tamagotchi Planet Currency (Maximum: 99,999 points).

PROFILE

Shows your Tamagotchi character's profile. Edit details, or send an image to your mobile device!

Tamagotchi Name
 Personality
 Days Spent Together
 Current Main Room and Tamagotchi Character
 Latest Favorite Item of Tamagotchi character

Area of Residence
 Your Nickname
 Care Icon

Next page
 Open Edit Profile menu

EDIT PROFILE MENU

First, choose what you want to do!
EDIT: Edit your Profile details.
SEND PHONE: Send an image of your Profile details to your mobile device.

EDIT CATEGORY MENU

Select the category you want to change.
NICKNAME: Change your nickname.
BIRTHDAY: Change your birthday.
CHANGE ICON: Change Care icons.

SEND PHONE

You can send your Profile to your mobile device!

Select SEND PHONE on your mobile device and follow the on-screen instructions to scan the code and display your Profile on your mobile device.

Your Profile will be displayed in your mobile device's web browser, allowing you to save it as an image.
 * The method for saving data may differ according to the model and version of your mobile device.

DISPLAYING IMAGES ON YOUR MOBILE DEVICE

If your browser does not display the screenshot after scanning the second code, or displays a "504" error message, please try the following:
 * Your mobile device may not connect to your Tamagotchi Uni device if its data transmission method is giving priority to cellular data. Temporarily disabling cellular data in your mobile device's settings may resolve the issue.
 * Your mobile device may not connect to your Tamagotchi Uni device if its data transmission method is giving priority to Wi-Fi connections. Taking your device out of Wi-Fi range or temporarily disabling your smartphone's Wi-Fi settings may resolve the issue.
 * If you have security software enabled, it may prevent connections from working properly.
 * This product is not guaranteed to be compatible with all mobile device models.

18 CARE ICONS

You can receive CARE ICONS by fulfilling various conditions. Try to collect them all!

Icon List

Icon Details

Amount to reach the next level

Unacquired icons

View CARE ICONS you've obtained here! Select an icon you wish to view in the Icon List to bring up the icon's details. The conditions for obtaining the icon will be displayed, and you can turn the page to see how long to reach the next level.

THE ICON'S COLOR CHANGES!

Some turn rainbow-colored in one try!

19 SETTINGS

Change settings such as the screen brightness and sound!

BRIGHTNESS

Change the brightness of the screen.

Darken
 Brighten
 Save & Exit

SOUND

The volume can be adjusted.

Decrease
 Increase
 Save & Exit

No sounds will play when on this screen.
 * Please note that calls for treatment and feeding will also be turned off.

20 FEED

Your Tamagotchi character gets hungry and its happiness level starts to drop, it's time to feed it!

FEED

Amount Held

Choose what you want to feed it!

- Feed your Tamagotchi FOOD to refill its HUNGER meter, and SNACKS to increase its HAPPY level!
- Each Tamagotchi character has its own likes and dislikes, so try different kinds of FOOD and SNACKS!
- Items that display a quantity will decrease by one each time you feed your Tamagotchi character.
- Items that do not display a quantity can be given to your Tamagotchi character as many times as you like!

DLC ICON
 Items that you download will have a "DLC icon" displayed in the upper right corner! See SECTION 27 NETWORK <DOWNLOAD> for more information on downloads!

DELIVERY

* This cannot be used during the Baby stage.

1: Get food delivered! First, choose between FOOD or SNACKS.

Places that display this symbol require Gotchi Points (money on Planet Tamagotchi) for purchase.

Quantity

2: Choose what you want delivered.

- You can have up to 3 of the same item. You won't be able to buy any more than that!
- Items marked with FREE can be acquired free of charge (0 Gotchi Points)!
- Sales are held on the 5th, 15th, and 25th of every month! Prices are reduced by 50%!

Price

3: Choose how many you want to buy. Your purchases will be sent to your house!

27 NETWORK

- Set up a Wi-Fi connection or adjust network settings.
- If you're having trouble, ask an adult to help.

First, choose what you want to do.



NETWORK SETTINGS

Choose how you want your network connection to behave.

- * Auto Update and Plane Mode lights: Show whether each mode is on or off.

OFF ON

WI-FI SETTINGS

The Network List will show up first.

- * Saved Wi-Fi connections will show up here. Press B on saved settings to bring up the connection confirmation screen.
- * Up to 3 connections can be saved. Switch pages to view other settings.
- * If there is space for new settings, you can switch to the available settings page to bring up the new connection screen.

Next page Confirm

CHECK SETTINGS: Displays Wi-Fi connection information.

CHANGE SETTINGS: Manually re-configure the Wi-Fi connection. (⇒ CHANGE SETTINGS below.)

TEST CONNECTION: Tests the currently connected Wi-Fi.

DELETE: Remove the current settings.

Begin setting up a Wi-Fi connection.

BY PHONE: Set up using your mobile device. (⇒ SECTION 13 WI-FI CONNECTION SETTINGS <SETTING BY PHONE>)

BY DEVICE: Set up using the Tamagotchi Uni device. (⇒ SECTION 13 WI-FI CONNECTION SETTINGS <SETTING BY DEVICE>)

New Connection Screen

CHANGE SETTINGS

Enter the necessary information for a new connection.

SSID: Enter the SSID.

- * Non-alphanumeric characters will not be displayed. If the SSID contains non-alphanumeric characters, they will be displayed as "?".

PASSWORD: Select from WPA, WPA 2, or WPA 3, and enter the password. This will not work with unsecured networks.

DHCP: First, press A to select whether to connect to the DHCP server automatically or manually, and press B to confirm. If you choose manual, you will be prompted to enter the DHCP server information. Please enter the values for each setting.

SETTINGS COMPLETE: Save the current settings and perform a connection test.

AUTO UPDATE

When AUTO UPDATE is turned on, the system will automatically connect to the network once a day to update data. Automatic updates will occur when the following two conditions are met:

- The Tamagotchi character is sleeping.
- The device has enough battery life or is connected to the charging cable.

If both conditions are not met, automatic updates will not occur. This screen will appear during automatic updates.

ON/OFF Confirm

The following occurs during automatic updates.

- New update check (in the event of an available update, NEW! will appear on the update menu. Please start the update manually.)
- Notification update (in the event of an available update, NEW! will appear on the update menu.)
- DLC list update.
- Update of Tamagotchi characters and TAMA FASHION items in the Tamaverse.

NEW! Mark UPDATE: Appears when there's a new update available.

INFO: Appears when there are unread notices.

PLANE MODE

Turning ON PLANE MODE turns OFF Wi-Fi connections (stops the sending of radio waves).

ON/OFF Confirm

* Please turn on Plane Mode when you are on an airplane or in other places where the use of wireless communications is restricted.

PARENTAL CONTROLS

When parental controls are turned on, a password will be required for selected menus. Use this feature when you do not want your children to change the Wi-Fi settings or certain other features.

<SETTINGS>

1: Switch parental controls ON/OFF and set a password. Turn parental controls on to continue to the password input screen.

ON/OFF Confirm

2: Enter the password you would like to use for parental controls. Enter the password again for confirmation, and if it is correct, the parental controls will turn on. (⇒ 11 SETTINGS <ENTERING LETTERS>)

<RESTRICTION SETTINGS>

Set what will be restricted by parental controls. Select the item you want to restrict and a description of it will appear. Switch ON/OFF to return to the item list.

ON/OFF Confirm

*Make sure you don't forget the parental controls password. If you forget the password, you will have to erase the device's data and reset all settings.

RULES & POLICIES

TERMS: Shows the Terms of Service. Scan the code with your mobile device.

PRIVACY POLICY: Shows the privacy policy. Scan the code with your mobile device.

IP: Shows intellectual property information.

<PRIVACY POLICY>

<https://tmgc.tyb.jp/UNI/PRIVACYPOLICY/>



<IP>

<https://tmgc.tyb.jp/UNI/LEGALINFO/>



<TERMS OF USE>

<https://tmgc.tyb.jp/UNI/AGREEMENTS/>



DOWNLOAD

Download Tamaverse areas and items!

<INPUT CODE>

Input the download code!

- If you successfully enter the code, it will be registered in the device and begin a download.
- The downloaded item will go to your ITEMS.

<COLLAB>

Swap out collab areas you have downloaded onto your device! First, choose the collab area you want to use.

Select YES to switch to that area.

- When you switch collabs, all items purchased at the previous collab outing (those with the DLC mark) will disappear.
- You cannot switch collabs if the Tamagotchi character you're raising is a character from any collab.

<ITEMS>

Download and delete purchased items! First, choose an item to view its details. You can download anything marked with DOWNLOAD. You can delete anything marked with DELETE.

- Up to 8 kinds of downloadable items can be stored on one device.
- You can re-download any item you've deleted from your device as many times as you want!

<UPDATE LIST>

Update the list of downloadable content. Select YES to connect to Wi-Fi and update the list.

UPDATE

Update the Tamagotchi Uni device!

CHECK: Connect to the network and check for updates. If an update is available, it will be installed automatically.

LAST UPDATE: Shows update history.

- * Do not press the reset button during an update.
- * Up to 9.75MB of data will be downloaded at once.
- * After updating, be sure to reset the time using "DATE/TIME" (⇒ SECTION 14 VIEWING SCREENS <HOLD A BUTTON ON THE STANDBY SCREEN>).

INFO

Catch up on the latest Tamagotchi Uni news! There might be a present waiting for you!

MAIL: Shows Tamagotchi Uni-related notices.

GIFT: You might get a gift, follow the on-screen instructions to receive it!

RENEW INFO: Connect to the network to see if there are any new announcements.

TROUBLESHOOTING

- I can't connect with another Tamagotchi device!
- See the section on connections. (⇒ SECTION 26 CONNECT)
- The LCD screen is hard to see!
- Try adjusting the screen's brightness. (⇒ SECTION 19 SETTINGS <BRIGHTNESS>)
- I can't hear anything!
- Go to SOUND and check that it's set to ON. (⇒ SECTION 19 SETTINGS <SOUND>)
- The screen is completely black (or white), there's no sound, the home button won't do anything, and/or the reset button doesn't work!
- The battery may have run out. [When the battery runs out, the Low-Battery Screen may not appear.] See CHARGING THE DEVICE for instructions on how to charge the battery. (⇒ SECTION 8 CHARGING THE DEVICE)
- My Tamagotchi character won't wake up! Or it won't go to sleep!
- Your Tamagotchi character will wake up or go to sleep on its own at scheduled times. Check to make sure your device time is set correctly. (⇒ SECTION 14 VIEWING SCREENS) If a.m./p.m. are incorrectly set, your Tamagotchi character's day and night cycle will be flipped.

AFTER PRESSING THE RESET BUTTON

- The device has undergone strong shock or something similar, and it no longer works or the screen does not display correctly.
- When you press the Reset Button, you will see a screen with the options CONTINUE or RESET ALL. If you wish to continue raising your current Tamagotchi character, select CONTINUE. After you return to the home screen, adjust the current date and time by going to DATE/TIME (⇒ SECTION 11 SETTINGS)
- If you want to raise a new Tamagotchi character, select RESET ALL. You will then register your information and a new egg will appear. The egg will hatch after a little while.
- * If you select RESET ALL, all item data and settings will be erased and restored to default.
- * If the time runs out and the screen light goes out while the CONTINUE or RESET ALL selection screen is still displayed, the device will automatically proceed with the CONTINUE option.

- "Wi-Fi" is a registered trademark of the Wi-Fi Alliance.

PRECAUTION: Recharge only under adult supervision and never recharge the product unattended. Please read the enclosed user manual or instruction sheet in detail before recharging the product. USB type-C charging cable is included.



Li-ion
3.7V, 270mAh



Intertek
EP5025405

ENERGY
PERFORMANCE
VERIFIED
RENDEMENT
ENERGETIQUE
VERIFIE