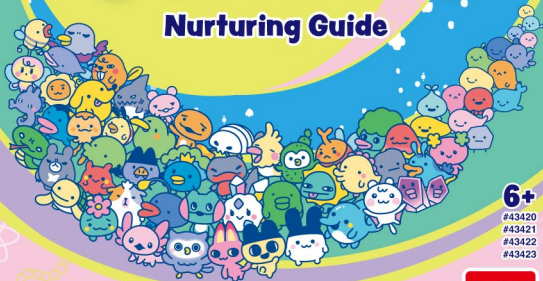


EN

BANDAI NAMCO

# Tamagotchi Paradise™

Nurturing Guide



6+

#43420

#43421

#43422

#43423

©BANDAI  
MADE IN CHINA

BAN  
DAI

# **Welcome to the Tamagotchi Lab**

**Ever since Tamagotchi appeared on Earth, hundreds of thousands have found loving, caring homes with humans. Yet, for Tamagotchi lovers, there still remain new frontiers to be explored.**

**We at the Tamagotchi Lab have kicked off the new Paradise project to turn your Tamagotchi experience interstellar! As your care assistants, we want to help you pour your love into your Tamagotchi character in your own way—with different fields, perspectives and levels of closeness.**

**Tamagotchi character cannot live full lives without our watchful care. They keep us busy with needing good meals and a clean environment, and they grow incredibly fast. But through all that steady work, we grow to adore our strange and whimsical little creatures.**

**So, follow along to Paradise, where new characters and new discoveries await you, and are sure to bring you laughter and joy as you spend wild and wonderful days with your Tamagotchi Paradise!**

# Table of Contents

<b>1 Tamagotchi</b>	<b>P5</b>
<b>2 Tamagotchi Device</b>	<b>P7</b>
<b>3 Raising Your Tamagotchi Character</b>	<b>P9</b>
<b>4 New Tamagotchi Planet's Life</b>	<b>P10</b>
<b>5 Caring for New Tamagotchi Planet</b>	<b>P11</b>
<b>6 Using the Lab App</b>	<b>P19</b>
<b>7 When in Trouble</b>	<b>P26</b>

\* This instruction manual is based on the PINK LAND device. For other devices, the characters and screen images in the instruction manual may differ slightly.



**PINK LAND**



**BLUE WATER**



**PURPLE SKY**

# You can play in three different TAMA FIELDS.



PINK LAND

Start with

LAND



+

WATER



+

SKY



BLUE WATER

Start with

WATER



+

SKY



+

LAND



PURPLE SKY

Start with

SKY



+

LAND



+

WATER



# 1 Tamagotchi

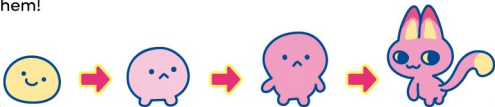
## New Tamagotchi Planet

Tamagotchi Planet received so much human love that it exploded with joy and gave birth to an egg! Enrich the New Tamagotchi Planet born from this egg and grow it into a fine planet. This is the lab's mission to you.



## Tamagotchi character

Tamagotchi character are mysterious creatures. Since their discovery on Earth in 1996, they have been raised by tens of millions of people around the world. They love exciting things, such as the fields they live in and the food they eat. They will change their appearance and grow according to what excites them!

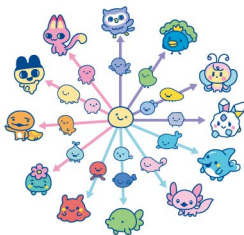


It has been confirmed that Tamagotchi character can be raised in up to three fields depending on the New Tamagotchi Planet's level of development.



Depending on how you raise them, they can grow into 12 different species.

There are over 50 adult characters in total, including an unidentified Tamagotchi character.



**By further "breeding" them,  
this number can grow to over 50,000!**

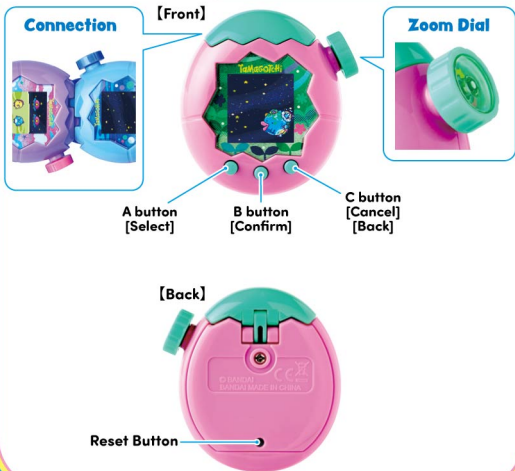


## 2 Tamagotchi Device

### Tamagotchi Device

Tamagotchi character can live comfortably with this training machine developed for them. By operating the Zoom dial, you can change the magnification and take care of your Tamagotchi character.

You can also Select and Confirm by rotating and pressing the dial instead of the buttons!



## Entering Numbers

**Scroll to next number:** A button/Turn dial forward

**Scroll to previous number:** Hold C button and press A button/  
Turn dial backward

**Confirm/Proceed:** B button/Dial

**Return to previous selection:** Press C button twice

## Entering Letters



1. Move the cursor and select the box to enter a letter.  
(The cursor will blink until a selection is made.)

**Confirm box:** B button/Press the dial  
**Move cursor forward:** A button/Turn dial forward  
**Move cursor backward:** C button/Turn dial backward



2. Select the row with the letter you want.  
\* The menu is displayed in the following order:  
letters > numbers > symbols > smileys > end (see 4. below).

**Select row:** A button/Turn dial forward or backward  
**Confirm row:** B button/Press dial



3. Move the cursor and select the letter/icon.

**Select letter:** A button/Turn dial forward or backward  
**Confirm letter:** B button/Press dial



4. Select YES on the confirmation screen to finish typing.  
● How to Reach the Confirmation Screen (3 ways)
  - Scroll to the end row and press the B button.
  - Move cursor to the last letter box and press the A button.
  - Enter a letter in the last letter box and press the B button.

**Confirmation  
Screen**



# 3 Raising Your Tamagotchi Character

## Register Information to the Lab

Register your information on your Tamagotchi device. Once you Complete the registration, you will receive a New Tamagotchi Planet egg from the lab.



Language



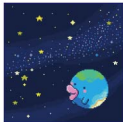
Date/Time



Birthday

## New Tamagotchi Planet's Birth

When you press the button on the Zoom dial, an Egg Bang will occur and your New Tamagotchi Planet will be born. When you zoom in, you can see the first Tamagotchi egg being born.



Push



Zoom

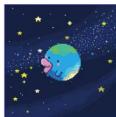
## 4 New Tamagotchi Planet's Life

### New Tamagotchi Planet's Life

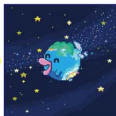
New Tamagotchi Planet will grow the more you raise your Tamagotchi character. A great New Tamagotchi Planet will develop into Paradise. Grow it into a wonderful Paradise!



The Egg Bang



Baby New Tamagotchi Planet



New Tamagotchi Planet



Paradise!

### Tamagotchi Life

Tamagotchi character can grow into various forms! What kind of character they become is up to you.



Egg



Baby



Kid



Young



Adult

# 5 Caring for New Tamagotchi Planet

By turning the Zoom dial, you can view New Tamagotchi Planet at each magnification.



Zoom Dial

Turn

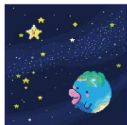


Turn the Zoom dial to change the magnification! Press the A button to open the Care menu!

## TAMA SPACE

→p.13

You can view the State of the New Tamagotchi Planet at the cosmic level.



### ● CONNECTION

- ↳ PLAYDATE
- ↳ GIFTS
- ↳ PLANETS

### ● TAMA STARS (Past Tamagotchi Character)

### ● DECO PLANET (Add accessories)

### ● TRAVEL (Go to other planets)

### ● PLANET LV. (Your level)



## TAMA FIELD

→p.15

You can view the nurturing and field Tamagotchi characters.



### ● OUTSIDE TOY

- ↳ PLACE
- ↳ REMOVE

### ● EGG HUNT ↳ VOLCANO ↳ SPRING

### ● CLEAN POOP

### ● FIELDS ↻



## TAMA

→p.16

Take care of your Tamagotchi character while it's growing.



### ● FEED

- ↳ FOOD
- ↳ SNACKS

### ● PLAY

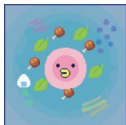
- ↳ ARROW
- ↳ FLAGS
- ↳ 3 UFOS
- ↳ WALKING

### ● CLEAN TAMA

## TAMA CELL

→p.18

Zoom in on your Tamagotchi character's body and see what's going on inside.



### ● STATUS/SPECIES/TAMAGOTCHI NAME

### ● SECRET CODE



The cell composition will change depending on the Tamagotchi character. Be sure to check it often.

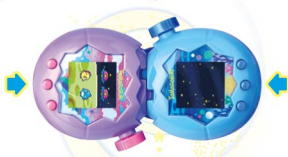
# Start caring for your Tamagotchi character!

## TAMA SPACE ► CONNECTION

Start a **CONNECTION** with your friend's Tamagotchi device.

1. Begin a **CONNECTION** by selecting **PLAYDATE** or **GIFTS**. Be sure to select the same action on both devices.
2. When the connection standby screen is displayed, you can connect to another device.  
Press the B button to start the **CONNECTION**.

\*Do not detach the devices while they are connected!



Connection  
Standby Screen



## PLAYDATE

Play, fight, or get a new addition to the family!



## GIFTS

Gift your friend with various ITEMS!  
Hope your friend will be happy!



## PLANETS

You can view the planets of friends you've connected with.

## DOWNLOAD

Used to download items.

## TAMA SPACE ► TAMA STARS

Look at the stars to remember past Tamagotchi characters.



Select a Tamagotchi star.



It will remind you of the memories of your past Tamagotchi characters.

## TAMA SPACE ► DECO PLANET

Make your New Tamagotchi Planet fashionable!



Select DECO ITEMS to add to your New Tamagotchi Planet.



Depending on what you add, something good might happen.

## TAMA SPACE ► TRAVEL

Collect lots of Tamagotchi poop and go on a trip!



Try collecting lots of Tamagotchi poop!



Choose which planet you want to visit and take off!

## TAMA SPACE ► PLANET LV.

Raise your Tamagotchi character to raise the planet level!



Read the level-up goals to help nurture your character!



Leveling up will add to your activities.

## TAMA FIELD ▶ **OUTSIDE TOY**

You can arrange the things you get in the field!



What kind of field will you create?



They might even play with what you put there!

## TAMA FIELD ▶ **EGG HUNT**

Let's go find food! What kind of delicacies will you find?



Where will you look?



Use the food you found from sections below!

TAMA ▶ **FEED**

SHOP ▶ **ITEM/MEAL**

## TAMA FIELD ▶ **CLEAN POOP**

Clean up poop frequently and use it as biofuel!



Clean the poop by flushing it with water!



The collected poop can be turned into biofuel to TRAVEL!  
➡ See other section.

## TAMA FIELD ▶ **FIELDS**

You can move from where you currently live to another field!

\*Young and Adult Tamagotchi characters can't move.



Chose field and...



Move to a new world!

## TAMA ▶ FEED

If your Tamagotchi character gets HUNGRY and its HAPPY starts to drop, it's time to feed it!



Give them  
**FOOD.**



Give them  
**SNACKS.**



## TAMA ▶ PLAY

You can play with your Tamagotchi character. Their HAPPY will increase when you play together!



### ARROWS

Which way will they turn?  
Press A button for left,  
B for right.



The bigger this number, the greater the success!

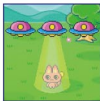


### FLAGS

Follow the flags.  
A button for white.  
B button for red.  
A and B buttons simultaneously for both.



When both are down, don't push any buttons. Look out for the fake!



### 3 UFOS

Where is your character hiding?  
Press A button to choose, B button to confirm.



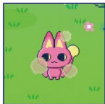
### WALKING

Rotate dial to avoid obstacles.



TAMA ► **CLEAN TAMA**

Keep your Tamagotchi character's body clean. If you fail to do so, they will become dirty.



I'm dirty...



Clean by pushing a button or the dial!



I'm all clean!

Check the status of your Tamagotchi character and take care of it!



You can see how hungry they are and how they are feeling!



You can check Tamagotchi species and names!



Press the B button on the screen showing the status/species/name of a Tamagotchi character, and a SECRET CODE will appear! Scan the 2D Code with your phone or other device! (Internet fees may apply.)

# 6 Using the Lab App

The Lab offers support for Tamagotchi nurturing care.



Push



Hold down the Zoom dial to open the Lab Menu.

## LAB MENU



INFORMATION



MINI GAMES



SHOP



HELP



LAB LOG



SETTINGS



## INFORMATION

Check your information and goals.

### USER INFO



View information such as:

- Username
- Gotchi Points held
- Number of characters raised
- User's birthday

(You cannot change user information without resetting your device.)

## MISSION

Get a reward for finishing a MISSION!



Check the  
MISSION  
content!



Finish to get a  
reward!



## MINI GAMES

Play MINI GAME to earn Gotchi Points (New Tamagotchi Planet money).



3 levels of play.  
EASY, NORMAL, HARD



Good luck with the  
MINI GAME!



You got Gotchi  
Points!



### FEEDING BABY MILK!

Give milk to the crying baby quickly!  
Move milk: A button  
Give milk: B button



### DELIVERING VITAMIN!

Move the vitamins left and right to jump at the right time!  
Jump left: A button/Turn dial backward  
Jump right: B button/Turn dial forward



### **MATCHING MEALS!**

Find the matching food beneath the cover!  
Move fork: A button/Turn dial backward or forward  
Choose a plate: B button/Press dial



### **CATCHING**

Move the ShiroTama up and down to clean as much poop as possible!  
Move up: A button/Turn dial forward  
Move down: B button/Turn dial backward



### **CLEANING DUST!**

Move the cursor left and right to vacuum up the dust!  
Move left: A button/Turn dial backward  
Move right: B button/Turn dial forward



### **PUNCHING METEORITE!**

Punch the meteorites at the right time to send them flying!  
Left: A button  
Middle: B button  
Right: C button



## **SHOP**

Buy helpful items for raising your Tamagotchi character.

### **ITEM**

Buy ITEMS for your planet!



You can purchase the following:

- FOOD
- SNACKS
- OUTSIDE TOY
- DECO ITEMS

## REPAS

Cook MEALS!



Pick the food you want to make and combine the ingredients.

\*You can't make a dish if you don't have enough ingredients.

➡Go here to gather ingredients!

TAMA FIELD ▶

EGG HUNT

## SELL



Sell items you don't need in exchange for Gotchi Points!

## SHOP CODE



Enter a SHOP CODE to get an amazing item!

Find and enter a SHOP CODE like the one below, and a new item will appear in the SHOP!



SHOP CODE ➡ 53684743



## HELP

Leave your Tamagotchi character with the TAMA SITTER or get a NEW TAMA to start nurturing again.

### TAMA SITTER

Call TAMA SITTER when you can't care for your Tamagotchi character!



Have the TAMA SITTER stop by! (Requires Gotchi Points)



They'll take care of your Tamagotchi character for you!

### NEW TAMA



Once you release your current Tamagotchi character into the FIELD, you will receive a new EGG!

### BREED

BREED Tamagotchi character for a new baby who might inherit body and eye colors from its parents! What sort of Tamagotchi character will you raise next?



Select who to BREED with.



If BREED is successful, a new egg will appear and a Tamagotchi character will be born.



## LAB LOG

Let's research Tamagotchi characters by looking through the TAMA FILE and MICROSCOPE.

### TAMA FILE

See all the Tamagotchi characters that can appear!



Select the field the Tamagotchi character lives!



Which Tamagotchi character do you want to see?

### MICROSCOPE ► LAB CODE

You can research a new TAMA CELL by inputting the LAB CODE.



Enter in a LAB CODE like the one on the Lab Sticker to the right to unlock a new entry in the COLLECTION. The construction of the TAMA CELLS will give you hints as to how to raise that specific Tamagotchi character!



### MICROSCOPE ► COLLECTION



Information about Tamagotchi character is stored here. Select a Tamagotchi and zoom in with the zoom dial to examine its TAMA CELLS!





## SETTINGS

Change the SETTINGS on your Tamagotchi device.

### SOUND



Move the meter to the right to increase volume.

### BRIGHTNESS



Move the meter to the right to increase screen brightness.

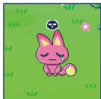
### TIME



Set the current date and time.

# 7 When in Trouble

## Healing Your Tamagotchi character

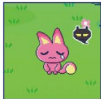


**TAMA SICK**

If your Tamagotchi character shows the symptoms on the left, Zoom into TAMA CELL and press any button (A, B, C, or dial) to give it treatment!

## Saving Your Tamagotchi character

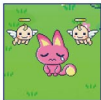
If you let your character get TAMA SICK or don't take good care of it, the Grim Gotchi will appear. If you see the Grim Gotchi, hurry and press any button (A, B, C, or the dial) to shoo it away!



**Here comes the Grim Gotchi!**

## Tamagotchi character is Dead

If your Tamagotchi character dies, the Death screen will appear. Press the A button while holding the C button and choose NEW EGG to start raising your new Tamagotchi character.



If your Tamagotchi character dies, nurture a new Tamagotchi character.

**The Death screen**

## Emergency!

While you're raising your Tamagotchi character, you can get in serious trouble! In the event of an emergency, protect your Tamagotchi character!



**Meteorites?!**



**Dododotchi is coming?!**

## Others

- **The LCD screen is hard to see!**
  - ↳ Adjust the screen's brightness. (⇒ Section 6 Using the Lab App <SETTINGS>)
- **I can't hear any sound!**
  - ↳ Go to SOUND SETTINGS and check that it's set to ON.  
(⇒ Section 6 Using the Lab App <SETTINGS>)
- **The screen is completely black (or white), there's no sound, the home button won't do anything, and the reset button doesn't work!**
  - ↳ The batteries may be running low. (The batteries may run out without the low battery screen appearing.) Refer to the black and white instruction sheet and change the batteries.
- **My Tamagotchi character won't wake up/won't go to sleep!**
  - ↳ Your Tamagotchi character will wake up or go to sleep on its own at scheduled times. Check to make sure your time is set correctly. (⇒ Section 6 Using the Lab App <SETTINGS>) If a.m./p.m. is incorrectly set, your Tamagotchi character's day and night cycle will be flipped.
- **The parts came off!**
  - ↳ Please insert firmly until you hear a click.



TaMaGoTchi<sup>TM</sup>  
PaRaDiSe<sup>MC</sup>